

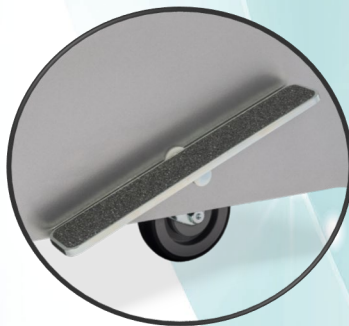
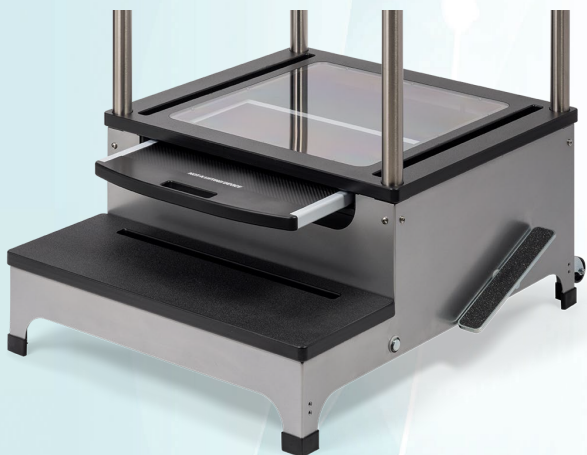
Complete View 2 step Weight Bearing Platform with Swivel 360 System

Imaging Platform

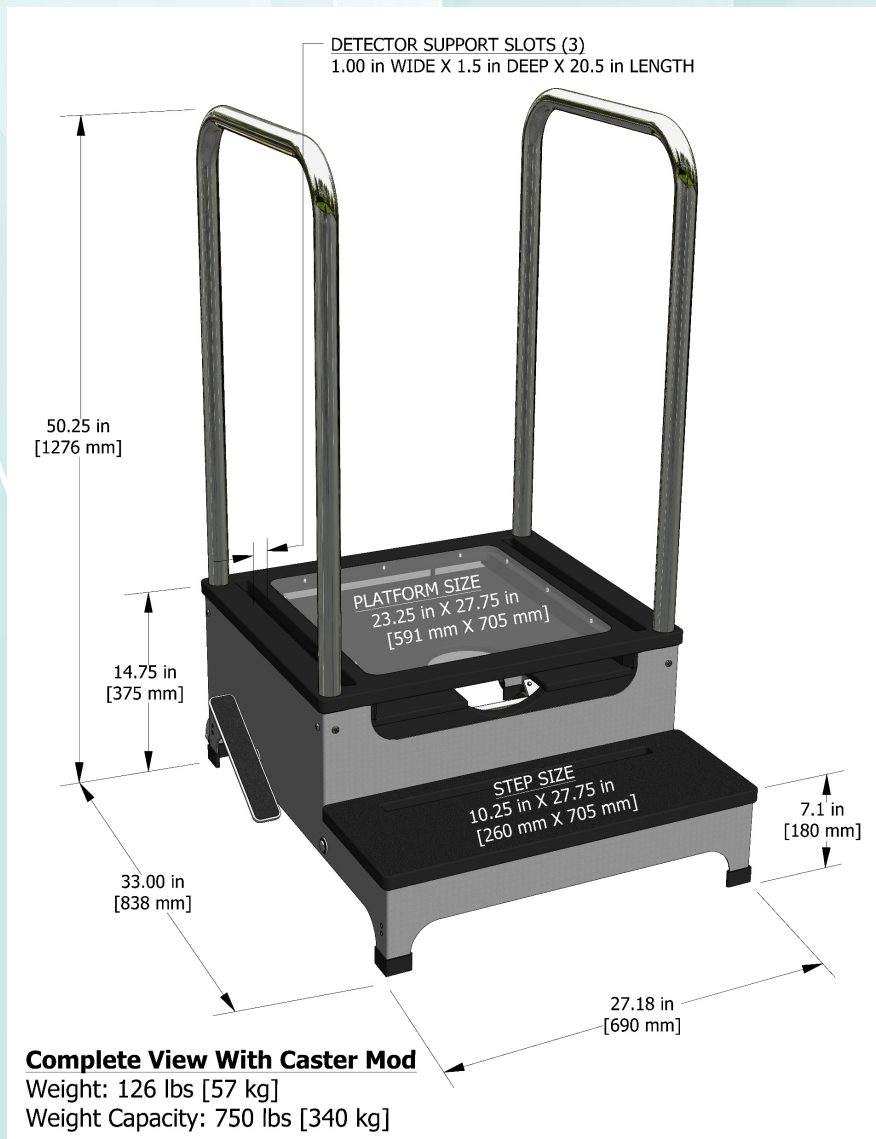
Weight Bearing Platforms accommodate Flat Panel Detectors (DR) and CR Cassettes. Slot openings are customized for a precise fit avoiding misalignment and retakes.

The Complete View 2 Step Weight Bearing Platform features a NEW, patent pending caster system which allows for 360-degree rotation and effortless mobility. Designed to assist with positioning both the detector and patient for weight bearing lateral, AP and other anatomical views from a single patient position.

Constructed of HDPE and stainless steel for a rugged look and durable design to last a lifetime.



Complete View 2 Step Platform



The Complete View 2 Step Weight Bearing Platform safely elevates patients up to 15 in. during weight bearing lateral, AP and other anatomical views.

- *Swivel 360 system for industry leading 360-degree mobility*
- *Lock-N-Secure® II Panel Protector included*
- *Dual foot pedals for flexibility and ease of use*
- *Auto-lock feature and anti-slip platform for safety*
- *Medical grade stainless steel side handrails for patient stability*
- *750 pounds weight capacity*
- *Simple to clean and sanitize*

Weight Bearing Platforms come fully assembled and tested for attenuation. Ships LTL motor freight at 220 pounds.